

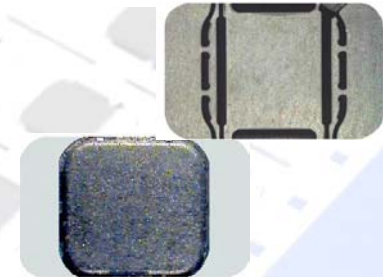
# Security Packaging Center

## Introduction of MCC8-2-2

---

### ICs:

- contactless controller IC  
SLE 66CLX641P



### Applications:

- contactless chip cards according to ISO standard (780 $\mu$ m)
- national electronic ID documents (passport, ID cards, driver license)



### Features:

- very thin CL module with 330 $\mu$ m thickness
- very high mechanical robustness for long lifetime



# Security Packaging Center

## Product Availability MCC8-2-2

---

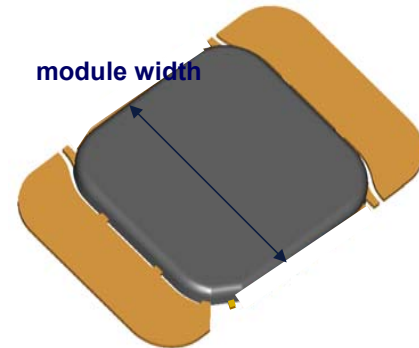
Product	Description	Status
SLE66CLX641P-MCC8	my-C, CL Ctrl.	Series release
[IC-Name]-MCC8	Contract Assembly	Available upon request

### Package Dimensions:

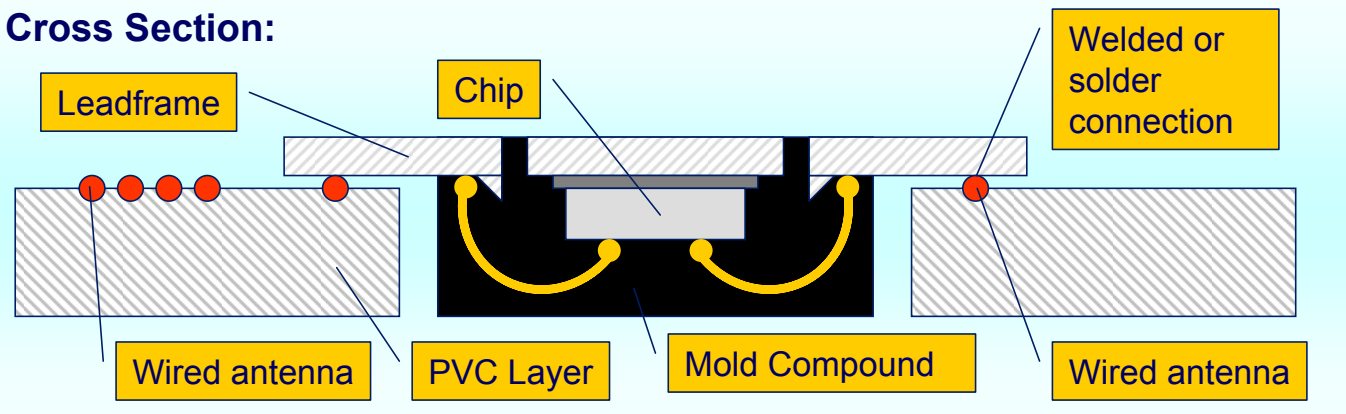
All values are compatible to MCC8-2-1 except module width (+200µm), larger max. chip size

Module thickness:	0.33 mm typ.
Module size:	8.1x5.3 mm
Mold size:	5.1x5.0 mm
Max. chip size:	max. 4.65x3.2 mm
Max. chip thickness:	0.175mm

### 3-dimensional view:



### Cross Section:





## Security Packaging Center

### Comparison MCC8-2-2 and MCC8-2-1

---

Feature	MCC8-2-1	MCC8-2-2
Thickness	308-320 $\mu$ m <b>330<math>\mu</math>m max.</b>	330 $\mu$ m typ. <b>340<math>\mu</math>m max.</b>
Mold Body	5.1 X 4.8mm	5.1 X <b>5.0</b> mm
Module Dimensions (Punching Size)	8.1 X 5.15mm	8.1 X <b>5.30</b>
Max. Chip Size	4.15 X 3.2mm	4. <b>65</b> X 3.2mm



## Security Packaging Center

### MCC8-2-2 – Main Benefits

---

#### **Yield improvement in card manufacturing**

thickness is only 340µm which allows for 400µm thin prelams, therefore better **card surface quality and printability**

#### **Cost reduction in production**

the leadframe design provides very easy punching with an **extended lifetime of production tools**

#### **Single form factor for contactless ICs**

the only contactless module in the world designed for **controller ICs** up to 15,1mm<sup>2</sup>

#### **Compatibility**

the dimensions are similar to existing module designs and it **can be used on installed inlay production equipment with adapted punching tools**

#### **Increased bending and mailing stability**

proven design for high robustness and mechanical flexibility in **ISO tests and additional tests** (e.g. stamping, pencil, bending, mailing, 3 wheel)